

All-District/All-State Jazz Band Audition Music

1. Swing Etude

Must be played with the backing track at the tempo specified.

2. Latin Etude

Must be played with the backing track at the tempo specified.

3. The Other Two Songs

Saxes/Trumpet/Trombone

1. 1st time through - play melody
2. 2nd time through - improvise

Piano/Vibes/Guitar

1. 1st time through - play the written melody
2. 2nd time through - comping chords
3. 3rd time through - improvise

Bass

1. 1st time through - play the written melody
2. 2nd time through - walking bass pattern
3. 3rd time through - improvise

Drums

1. 1st time through - play time/kicks in appropriate style
2. 2nd time through - play melody on the drums
3. 3rd time through - improvise a solo

4. Drum Set Styles (Drums Only)

- a. Must be played with backing tracks
- b. The judge will start and stop you as they please, so keep going

All backing tracks can be found at <http://www.cjbands.org/jazz-audition-material.html>

BASS

MOAJE SWING ETUDE 1

COMP. ERIC WARREN

(BASED ON THERE WILL NEVER BE ANOTHER YOU)

MEDIUM SWING ♩=126

IN 2

13 WALK IN 4

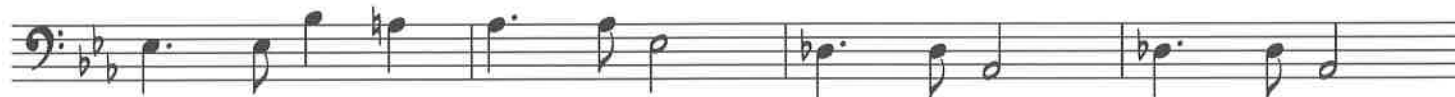
BASS

MOAJE LATIN ETUDE 1

(BASED ON BLUE BOSSA)

COMP. ERIC WARREN

BOSSA NOVA ♩=140



17 **C MIN⁶** **F MIN⁷**
PLAY CHANGES

D MIN^{7(b5)} **G^{7(#9)}** **C MIN⁶**

E^b MIN⁷ **A^{b7}** **D^b MAJ⁷**

D MIN^{7(b5)} **G^{7(#9)}** **C MIN⁶**

29

Bb BLUES SCALE

1. Bb BLUES



Kenny'll Make It

♩ = 96

A MELODY

Chord progression for Melody: Bb7, Eb7, Bb7, F-, Bb7, Eb7, Eb7, Bb7, D∅, G7+9, C-, F7, D-, G7, C-, F7

B SWING FEEL - Play 4 Choruses

Chord progression for Swing Feel: Bb7, Eb7, Bb7, F-, Bb7, Eb7, Eb7, Bb7, D∅, G7+9, C-, F7, D-, G7, C-, F7

C BOSSA NOVA FEEL - Play 4 Choruses

Chord progression for Bossa Nova Feel: Bb7, Eb7, Bb7, F-, Bb7, Eb7, E∅7, BbΔ, C-, D-, Db-, C-, F7, D-, G7, C-, F7

THE PREACHER

BASS

LISTEN AND ANALYZE HEAD

Track 7
JAZZ DEMO

DOWN-HOME SWING

PLAY THE HEAD

Track 8
PLAY ALONG

BY HORACE SILVER

INTRO
Gmi7

G#07

Ami7

Dmi7

Gmi7

C7

F6



F6

F7

Bb

B07

F6



G7

C7



F6

Bb6

A7



Gmi7

G#07

Ami7

TO CODA

Dmi7

Gmi7

C7

1.

F6

2.

F6



SOLO SECTION - 2 CHORUSES

F6

F7

Bb

B07

F6



G7

C7

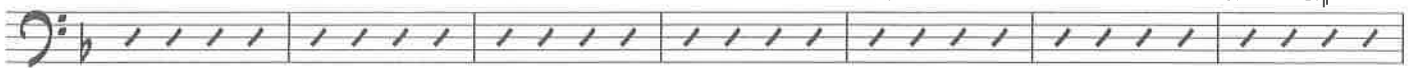
F6

Bb6

A7

Gmi7

G#07



Ami7

Dmi7

Gmi7

C7

F6

Gmi7

C7

F6

AFTER LAST SOLO D.S. AL CODA



CODA

Gmi7

G#07

Ami7

Dmi7

Gmi7

G#07

Ami7

Dmi7

Gmi7

C7

F6

