

# MISSOURI BANDMASTERS ASSOCIATION MISSOURI ALL-STATE BAND AUDITION MATERIALS

BASS CLEF BARITONE

Set I

Scale: All scales are to be MEMORIZED.

Prepare them all slurred and tongued in sixteenth notes at quarter note = 88.  
Scales should be performed ascending and descending. Scales given are the starting tone. DO NOT TRANSPOSE.

**All scales are to be prepared from required scale sheet as written.**

Chromatic: Perform the chromatic exactly as written.

Major Scales: C G D A E Ab Eb Bb F

Minor Scales: a e b f# c# f c g d

Books: *Arban Complete Conservatory Method for Trombone, #023 – Mantia (edited)/  
Carl Fischer Publication*

---

**For set I only (2020-2021), we will use only 9 major and 9 melodic minor scales. All 12 major scales will begin with set II (2021-2022).**

---

Set I (2020-21)	Arban	p. 29	#48
		p. 52	#28
		p. 126	#1 – lines 1, 5, & 11 (Bb, D, Ab)
		p. 202	#142
		p. 211	#6 – first 7 lines (to key change)
		p. 252	#10 – first 5 lines

---



# MISSOURI ALL-STATE-BAND AUDITION SCALES

to be played at a minimum tempo of quarter note = 88

BC Baritone

## Chromatic Scale

The chromatic scale is written on a single bass clef staff in 4/4 time. It consists of two lines of music. The first line shows the ascending scale from C2 to B4, with each note marked with a sharp sign (#). The second line shows the descending scale from B4 to C1, with each note marked with a flat sign (b). The notes are: C2, C#2, D2, D#2, E2, E#2, F2, F#2, G2, G#2, A2, A#2, B2, C3, C#3, D3, D#3, E3, E#3, F3, F#3, G3, G#3, A3, A#3, B3, C4, C#4, D4, D#4, E4, E#4, F4, F#4, G4, G#4, A4, A#4, B4.

## Missouri ASB Major Scales

### C Major Scale

The C Major Scale is written on a single bass clef staff in 4/4 time. It consists of one line of music showing the ascending scale from C2 to C4. The notes are: C2, D2, E2, F2, G2, A2, B2, C3, D3, E3, F3, G3, A3, B3, C4. The scale ends with a whole rest.

### G Major Scale

The G Major Scale is written on a single bass clef staff in 4/4 time. It consists of one line of music showing the ascending scale from G2 to G4. The notes are: G2, A2, B2, C3, D3, E3, F#3, G3, A3, B3, C4, D4, E4, F#4, G4. The scale ends with a whole rest.

### D Major Scale

The D Major Scale is written on a single bass clef staff in 4/4 time. It consists of one line of music showing the ascending scale from D2 to D4. The notes are: D2, E2, F#2, G2, A2, B2, C#3, D3, E3, F#3, G3, A3, B3, C#4, D4. The scale ends with a whole rest.

### A Major Scale

The A Major Scale is written on a single bass clef staff in 4/4 time. It consists of one line of music showing the ascending scale from A2 to A4. The notes are: A2, B2, C#3, D3, E3, F#3, G#3, A3, B3, C#4, D4, E4, F#4, G#4, A4. The scale ends with a whole rest.

### E Major Scale

The E Major Scale is written on a single bass clef staff in 4/4 time. It consists of one line of music showing the ascending scale from E2 to E4. The notes are: E2, F#2, G#2, A2, B2, C#3, D#3, E3, F#3, G#3, A3, B3, C#4, D#4, E4. The scale ends with a whole rest.

**B Major Scale**

Musical notation for the B Major Scale in bass clef. The key signature has two sharps (F# and C#). The scale is written in a single line, starting on B2 and ascending to B3, then descending back to B2. The notes are: B2, C3, D3, E3, F#3, G3, A3, B3, A3, G3, F#3, E3, D3, C3, B2.

**Cb Major Scale**

Musical notation for the Cb Major Scale in bass clef. The key signature has five flats (Bb, Eb, Ab, Db, Gb). The scale is written in a single line, starting on Cb2 and ascending to Cb3, then descending back to Cb2. The notes are: Cb2, Bb2, Ab2, Gb2, Fb2, Eb2, Db2, Cb2, Bb2, Ab2, Gb2, Fb2, Eb2, Db2, Cb2.

**F# Major Scale**

Musical notation for the F# Major Scale in bass clef. The key signature has three sharps (F#, C#, G#). The scale is written in a single line, starting on F#2 and ascending to F#3, then descending back to F#2. The notes are: F#2, G#2, A2, B2, C#2, D#2, E#2, F#2, E#2, D#2, C#2, B2, A2, G#2, F#2.

**Gb Major Scale**

Musical notation for the Gb Major Scale in bass clef. The key signature has six flats (Fb, Cb, Gb, Db, Ab, Eb). The scale is written in a single line, starting on Gb2 and ascending to Gb3, then descending back to Gb2. The notes are: Gb2, Fb2, Eb2, Db2, Cb2, Bb2, Ab2, Gb2, Fb2, Eb2, Db2, Cb2, Bb2, Ab2, Gb2.

**C# Major Scale**

Musical notation for the C# Major Scale in bass clef. The key signature has four sharps (F#, C#, G#, D#). The scale is written in a single line, starting on C#2 and ascending to C#3, then descending back to C#2. The notes are: C#2, D#2, E#2, F#2, G#2, A#2, B#2, C#2, B#2, A#2, G#2, F#2, E#2, D#2, C#2.

**Db Major Scale**

Musical notation for the Db Major Scale in bass clef. The key signature has five flats (Bb, Eb, Ab, Db, Gb). The scale is written in a single line, starting on Db2 and ascending to Db3, then descending back to Db2. The notes are: Db2, Cb2, Bb2, Ab2, Gb2, Fb2, Eb2, Db2, Cb2, Bb2, Ab2, Gb2, Fb2, Eb2, Db2.

**F Major Scale**

Musical notation for the F Major Scale in bass clef. The key signature has one flat (Bb). The scale is written in a single line, starting on F2 and ascending to F3, then descending back to F2. The notes are: F2, G2, A2, Bb2, C2, D2, E2, F2, E2, D2, C2, Bb2, A2, G2, F2.

**Bb Major Scale**

Musical notation for the Bb Major Scale in bass clef. The key signature has two flats (Bb, Eb). The scale is written in a single line, starting on Bb2 and ascending to Bb3, then descending back to Bb2. The notes are: Bb2, Ab2, Gb2, Fb2, Eb2, Db2, Cb2, Bb2, Ab2, Gb2, Fb2, Eb2, Db2, Cb2, Bb2.

**E<sub>b</sub> Major Scale**



**A<sub>b</sub> Major Scale**



**D<sub>b</sub> Major Scale**



**G<sub>b</sub> Major Scale**



Misouri ASB Melodic Minor Scales

**A Melodic Minor**

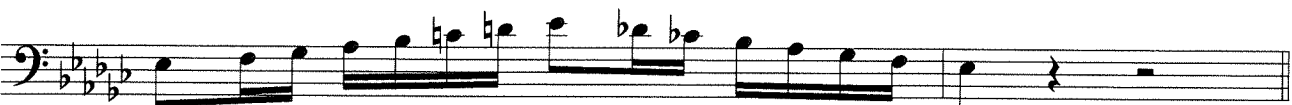


**E Melodic Minor**

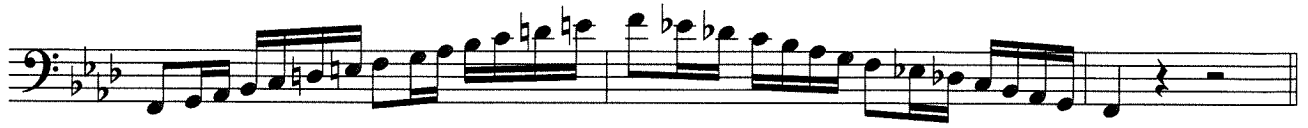


**B Melodic Minor**

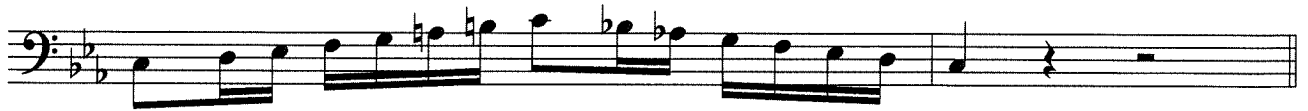


**F# Melodic Minor****C# Melodic Minor****G# Melodic Minor****A $\flat$  Melodic Minor****D# Melodic Minor****E $\flat$  Melodic Minor****A# Melodic Minor****B $\flat$  Melodic Minor**

**F Melodic Minor**



**C Melodic Minor**



**G Melodic Minor**



**D Melodic Minor**



Arban pg. 29 #48

A musical score for a piece numbered 48, starting on page 29. The score is written in bass clef with a key signature of one flat (B-flat) and a 6/8 time signature. It consists of five staves of music. The notation includes eighth and sixteenth notes, rests, and various fingering numbers (1-4) and slurs. The piece concludes with a double bar line.

Arban pg. 52 #28

A musical score for a piece numbered 28, starting on page 52. The score is written in bass clef with a key signature of one flat (B-flat) and a 3/4 time signature. It consists of five staves of music. Above the first staff, there are two instructions: "(Always for A)  $\sharp 6$ " and "(Always for Bb)  $\flat 6$ ". The notation is highly technical, featuring numerous triplets, slurs, and fingering numbers (1-3). The piece ends with a double bar line.

Arban pg. 126 #1 Line 1 Bb



Arban pg. 126 #1 Line 5 D



Arban pg. 126 #1 Line 11 Ab



Arban pg. 202 #142





Arban pg. 211 #6 First 7 Lines to Key Change

*start* Moderato

6

stop

Arban pg. 252 #10 First 5 Lines

*start* Andante

10

stop