

MISSOURI BANDMASTERS ASSOCIATION
MISSOURI ALL-STATE BAND AUDITION MATERIALS

BASSOON Set I

Scale: All scales are to be MEMORIZED.
Prepare them all slurred and tongued in sixteenth notes at quarter note = 88.
Scales should be performed ascending and descending. Scales given are the starting tone. DO NOT TRANSPOSE.

All scales are to be prepared from required scale sheet as written.

Chromatic: Perform the chromatic exactly as written.

Major Scales: C G D A E Ab Eb Bb F

Minor Scales: a e b f# c# f c g d

Books: Practical Method for Bassoon – Julius Weissenborn/Carl Fischer Publication

For set I only (2020-2021), we will use only 9 major and 9 melodic minor scales. All 12 major scales will begin with set II (2021-2022).

Set I Practical Method (2020-2021)	p. 35	Allegro – first 3 lines
	p. 43	first 4 lines
	p. 69	#5
	p. 81	#2
	p. 86	#12 – first page only



MISSOURI ALL-STATE-BAND AUDITION SCALES

to be played at a minimum tempo of quarter note = 88

Bassoon

Chromatic Scale

Chromatic Scale

The image shows two chromatic scales written in bass clef with a 3/4 time signature. The first scale is an ascending chromatic scale starting on B-flat, moving through B, C, C-sharp, D, D-sharp, E, F, F-sharp, G, G-sharp, A, and A-sharp. The second scale is a descending chromatic scale starting on A-sharp, moving through A, G-sharp, G, F-sharp, F, E-sharp, E, D-sharp, D, C-sharp, C, B, and B-flat. Both scales are written across three staves.

Missouri ASB Major Scales

C Major Scale

The C Major Scale is written in bass clef with a 4/4 time signature. It consists of an ascending scale from C to C and a descending scale from C to C, with a final whole note C. The scale is written across a single staff.

G Major Scale

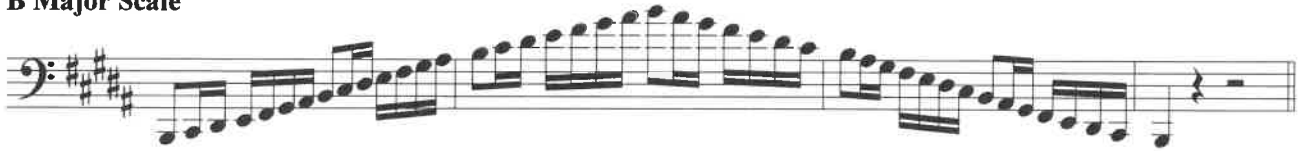
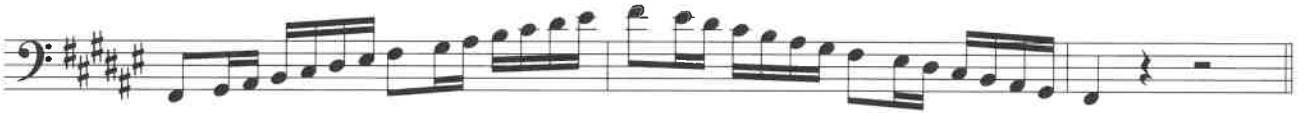
The G Major Scale is written in bass clef with a 4/4 time signature. It consists of an ascending scale from G to G and a descending scale from G to G, with a final whole note G. The scale is written across a single staff.

D Major Scale

The D Major Scale is written in bass clef with a 4/4 time signature. It consists of an ascending scale from D to D and a descending scale from D to D, with a final whole note D. The scale is written across a single staff.

A Major Scale

The A Major Scale is written in bass clef with a 4/4 time signature. It consists of an ascending scale from A to A and a descending scale from A to A, with a final whole note A. The scale is written across a single staff.

E Major Scale**B Major Scale****Cb Major Scale****F# Major Scale****Gb major Scale****C# Major Scale****Db Major Scale****Ab Major Scale**

E_b Major Scale

Missouri ASB Melodic Minor Scales

Musical notation for the E_b Major Scale in bass clef, 2/4 time. The scale consists of 12 notes: E_b, F, G, A_b, B_b, C, D, E_b, F, G, A_b, B_b. The notation shows an ascending and descending scale with a repeat sign at the end.

B_b Major Scale

Musical notation for the B_b Major Scale in bass clef, 2/4 time. The scale consists of 12 notes: B_b, C, D, E_b, F, G, A_b, B_b, C, D, E_b, F. The notation shows an ascending and descending scale with a repeat sign at the end.

F Major Scale

Musical notation for the F Major Scale in bass clef, 2/4 time. The scale consists of 12 notes: F, G, A, B_b, C, D, E, F, G, A, B_b, C. The notation shows an ascending and descending scale with a repeat sign at the end.

A Melodic Minor

Musical notation for the A Melodic Minor Scale in bass clef, 2/4 time. The scale consists of 12 notes: A, B, C, D, E, F, G, A, B, C, D, E. The notation shows an ascending and descending scale with a repeat sign at the end.

E Melodic Minor

Musical notation for the E Melodic Minor Scale in bass clef, 2/4 time. The scale consists of 12 notes: E, F, G, A, B, C, D, E, F, G, A, B. The notation shows an ascending and descending scale with a repeat sign at the end.

B Melodic Minor

Musical notation for the B Melodic Minor Scale in bass clef, 2/4 time. The scale consists of 12 notes: B, C, D, E, F, G, A, B, C, D, E, F. The notation shows an ascending and descending scale with a repeat sign at the end.

F# Melodic Minor

Musical notation for the F# Melodic Minor Scale in bass clef, 2/4 time. The scale consists of 12 notes: F#, G, A, B, C, D, E, F#, G, A, B, C. The notation shows an ascending and descending scale with a repeat sign at the end.

C# Melodic Minor

Musical notation for the C# Melodic Minor scale in bass clef. The scale is written in a single line, starting on C#4 and ascending to C#5. The notes are C#, D, E, F#, G, A, B, and C#. The notation includes a key signature of two sharps (F# and C#) and a bass clef. The scale is written in a single line, starting on C#4 and ascending to C#5. The notes are C#, D, E, F#, G, A, B, and C#. The notation includes a key signature of two sharps (F# and C#) and a bass clef.

G# Melodic Minor

Musical notation for the G# Melodic Minor scale in bass clef. The scale is written in a single line, starting on G#4 and ascending to G#5. The notes are G#, A, B, C, D, E, F#, and G#. The notation includes a key signature of two sharps (F# and C#) and a bass clef. The scale is written in a single line, starting on G#4 and ascending to G#5. The notes are G#, A, B, C, D, E, F#, and G#. The notation includes a key signature of two sharps (F# and C#) and a bass clef.

A^b Melodic Minor

Musical notation for the A^b Melodic Minor scale in bass clef. The scale is written in a single line, starting on A^b4 and ascending to A^b5. The notes are A^b, B^b, C, D, E, F, G, and A^b. The notation includes a key signature of three flats (B^b, E^b, and A^b) and a bass clef. The scale is written in a single line, starting on A^b4 and ascending to A^b5. The notes are A^b, B^b, C, D, E, F, G, and A^b. The notation includes a key signature of three flats (B^b, E^b, and A^b) and a bass clef.

D# Melodic Minor

Musical notation for the D# Melodic Minor scale in bass clef. The scale is written in a single line, starting on D#4 and ascending to D#5. The notes are D#, E, F, G, A, B, C#, and D#. The notation includes a key signature of two sharps (F# and C#) and a bass clef. The scale is written in a single line, starting on D#4 and ascending to D#5. The notes are D#, E, F, G, A, B, C#, and D#. The notation includes a key signature of two sharps (F# and C#) and a bass clef.

E^b Melodic Minor

Musical notation for the E^b Melodic Minor scale in bass clef. The scale is written in a single line, starting on E^b4 and ascending to E^b5. The notes are E^b, F, G, A, B, C, D, and E^b. The notation includes a key signature of three flats (B^b, E^b, and A^b) and a bass clef. The scale is written in a single line, starting on E^b4 and ascending to E^b5. The notes are E^b, F, G, A, B, C, D, and E^b. The notation includes a key signature of three flats (B^b, E^b, and A^b) and a bass clef.

A# Melodic Minor

Musical notation for the A# Melodic Minor scale in bass clef. The scale is written in a single line, starting on A#4 and ascending to A#5. The notes are A#, B, C, D, E, F, G, and A#. The notation includes a key signature of two sharps (F# and C#) and a bass clef. The scale is written in a single line, starting on A#4 and ascending to A#5. The notes are A#, B, C, D, E, F, G, and A#. The notation includes a key signature of two sharps (F# and C#) and a bass clef.

Musical notation for the A# Melodic Minor scale in bass clef. The scale is written in a single line, starting on A#4 and ascending to A#5. The notes are A#, B, C, D, E, F, G, and A#. The notation includes a key signature of two sharps (F# and C#) and a bass clef. The scale is written in a single line, starting on A#4 and ascending to A#5. The notes are A#, B, C, D, E, F, G, and A#. The notation includes a key signature of two sharps (F# and C#) and a bass clef.

Bb Melodic Minor

Two staves of musical notation for the Bb Melodic Minor scale. The first staff shows the ascending scale: Bb2, Bb3, C4, D4, Eb4, E4, F4, G4, Ab4, A4, Bb5, Bb5. The second staff shows the descending scale: Bb5, Ab4, G4, F4, E4, Eb4, D4, C4, Bb3, Bb2, followed by a whole rest.

F Melodic Minor

Two staves of musical notation for the F Melodic Minor scale. The first staff shows the ascending scale: F2, F3, G3, Ab3, A3, Bb3, Bb3, C4, D4, Eb4, E4, F4, G4, Ab4, A4, Bb5, Bb5. The second staff shows the descending scale: Bb5, Ab4, G4, F4, E4, Eb4, D4, C4, Bb3, Bb2, followed by a whole rest.

C Melodic Minor

Two staves of musical notation for the C Melodic Minor scale. The first staff shows the ascending scale: C2, C3, D3, Eb3, E3, F3, G3, Ab3, A3, Bb4, Bb4, C5, C5. The second staff shows the descending scale: C5, Bb4, Ab3, G3, F3, Eb3, E3, D3, C3, C2, followed by a whole rest.

G Melodic Minor

Two staves of musical notation for the G Melodic Minor scale. The first staff shows the ascending scale: G2, G3, A3, Bb3, B3, C4, D4, Eb4, E4, F4, G4, Ab4, A4, Bb5, Bb5. The second staff shows the descending scale: Bb5, Ab4, G4, F4, E4, Eb4, D4, C4, Bb3, Bb2, followed by a whole rest.

D Melodic Minor

Two staves of musical notation for the D Melodic Minor scale. The first staff shows the ascending scale: D2, D3, E3, F3, G3, Ab3, A3, Bb3, B3, C4, D4, Eb4, E4, F4, G4, Ab4, A4, Bb5, Bb5. The second staff shows the descending scale: Bb5, Ab4, G4, F4, E4, Eb4, D4, C4, Bb3, Bb2, followed by a whole rest.

Practical Method pg. 35 Allegro - first three lines

Allegro.
Minor

Major

Andante.

f *p* *f* *p*

Detailed description: This musical score is for a piece in 4/4 time, marked 'Allegro'. It begins in a minor key and transitions to a major key. The first line contains the first measure, starting with a forte (*f*) dynamic. The second line contains measures 2-4, with a piano (*p*) dynamic starting at measure 3. The third line contains measures 5-8, with a forte (*f*) dynamic starting at measure 5 and a piano (*p*) dynamic starting at measure 6. The tempo changes to 'Andante' at the end of the third line.

Practical Method pg. 43 First 4 lines

L'istesso tempo.

mf *p* *f* *mf*

L'istesso tempo.

Detailed description: This musical score is for a piece in 3/4 time, marked 'L'istesso tempo'. It is in a minor key. The first line contains measures 1-4, starting with a mezzo-forte (*mf*) dynamic. The second line contains measures 5-8, with a piano (*p*) dynamic starting at measure 5. The third line contains measures 9-12, with a forte (*f*) dynamic starting at measure 9 and a mezzo-forte (*mf*) dynamic starting at measure 10. The tempo remains 'L'istesso tempo' throughout. The fourth line contains measures 13-16, with a mezzo-forte (*mf*) dynamic starting at measure 13.

Practical Method pg. 69 #5

5.

Detailed description: This musical score is for exercise #5, in 3/4 time and a minor key. It consists of a single line of music with a series of eighth-note patterns. The exercise is numbered '5.' at the beginning.

Practical Method pg. 81 #2

Allegretto. (Tempo di Minuetto.)
risoluto

2. *f*

p

f

p

Detailed description: This musical score consists of four staves of music in bass clef, 3/8 time signature, and one flat key signature. The first staff begins with a forte (*f*) dynamic and a *risoluto* marking. The second staff starts with a piano (*p*) dynamic. The third and fourth staves alternate between *f* and *p* dynamics. The music features a variety of rhythmic patterns, including eighth and sixteenth notes, and rests.

Practical Method pg. 86 #12 (first page only)

Allegro.

12. *p*

cresc. - - - *f* *p*

rfp *rfp* *rfp*

marcato *f* *p* *cresc.* - -

f

Detailed description: This musical score consists of six staves of music in bass clef, 6/8 time signature, and one sharp key signature. The first staff begins with a piano (*p*) dynamic. The second staff features a crescendo (*cresc.*) leading to a forte (*f*) dynamic, followed by a piano (*p*) dynamic. The third, fourth, and fifth staves are marked *rfp* (ritardando, fortissimo, piano). The sixth staff includes a *marcato* marking and dynamic markings of *f*, *p*, and *cresc.* The music is characterized by dense sixteenth-note passages and rests.