

MISSOURI BANDMASTERS ASSOCIATION MISSOURI ALL-STATE BAND AUDITION MATERIALS

OBOE & ENGLISH HORN*

Scale: All scales are to be MEMORIZED.
Prepare them all slurred and tongued in sixteenth notes at quarter note = 88.
Scales should be performed ascending and descending. Scales given are the starting tone. DO NOT TRANSPOSE.

All scales are to be prepared from required scale sheet as written.

Chromatic: Perform the chromatic exactly as written.

Major Scales: C G D A E B/Cb F#/Gb C#/Db Ab Eb Bb F

Minor Scales: a e b f# c# g#/ab d#/eb a#/bb f c g d

Books: *Selected Studies for Oboe - Voxman/Rubank Publication*
Advanced Method for Oboe, Vol. 1 – Voxman & Gower/Rubank Publication

| | | | |
|----------------------|------------------|----------|---------|
| Set I (2020-2021) | Selected Studies | p. 6 | F Major |
| | Advanced Method | p. 6 | #6 |
| | | p. 6 | #7 |
| | | p. 6 | #8 |
| | | p. 36-37 | #20 |

| | | | |
|-----------------------|------------------|-------|---------|
| Set II (2021-2022) | Selected Studies | p. 8 | d minor |
| | Advanced Method | p. 7 | #13 |
| | | p. 10 | #28 |
| | | p. 10 | #29 |
| p.23 | | #5 | |

| | | | |
|------------------------|------------------|-------|---------|
| Set III (2022-2023) | Selected Studies | p. 21 | b minor |
| | Advanced Method | p. 9 | #27 |
| | | p. 11 | #37 |
| | | p. 11 | #38 |
| p. 35 | | #18 | |

| | | | |
|-----------------------|------------------|-------|---------|
| Set IV (2023-2024) | Selected Studies | p. 20 | D Major |
| | Advanced Method | p. 17 | #66 |
| | | p. 15 | #58 |
| | | p. 15 | #59 |
| p. 42 | | #24 | |

*The use of English Horn is on an "as needed basis." Check at the All-State registration table to determine if the audition is needed.



MISSOURI ALL-STATE-BAND AUDITION SCALES

to be played at a minimum tempo of quarter note = 88

English Horn

Chromatic Scale

The chromatic scale is written on two staves in 4/4 time. The first staff shows the ascending scale from C4 to C5, and the second staff shows the descending scale from C5 to C4. Each note is marked with its appropriate sharp or flat sign.

Missouri ASB Major Scales

C Major Scale

The C major scale is written on a single staff in 4/4 time, starting on middle C and ending with a quarter rest.

G Major Scale

The G major scale is written on a single staff in 4/4 time, starting on G4 and ending with a quarter rest.

D Major Scale

The D major scale is written on a single staff in 4/4 time, starting on D4 and ending with a quarter rest.

A Major Scale

The A major scale is written on a single staff in 4/4 time, starting on A4 and ending with a quarter rest.

E Major Scale

Musical notation for the E Major Scale. It consists of a single staff in treble clef with a key signature of three sharps (F#, C#, G#). The scale is written in a single line, starting on E4 and ending on E5, with a final whole note E4. The notes are: E4, F#4, G#4, A4, B4, C#5, D5, E5, D5, C#5, B4, A4, G#4, F#4, E4.

B Major Scale

Musical notation for the B Major Scale. It consists of a single staff in treble clef with a key signature of two sharps (F#, C#). The scale is written in a single line, starting on B3 and ending on B4, with a final whole note B3. The notes are: B3, C#4, D4, E4, F#4, G#4, A4, B4, A4, G#4, F#4, E4, D4, C#4, B3.

Cb Major Scale

Musical notation for the Cb Major Scale. It consists of a single staff in treble clef with a key signature of seven flats (Bb, Eb, Ab, Db, Gb, Cb, Fb). The scale is written in a single line, starting on Cb4 and ending on Cb5, with a final whole note Cb4. The notes are: Cb4, Bb3, Ab3, Gb3, Fb3, Eb3, Db3, Cb4, Bb3, Ab3, Gb3, Fb3, Eb3, Db3, Cb4.

F# Major Scale

Musical notation for the F# Major Scale. It consists of a single staff in treble clef with a key signature of one sharp (F#). The scale is written in a single line, starting on F#3 and ending on F#4, with a final whole note F#3. The notes are: F#3, G#3, A3, B3, C#4, D4, E4, F#4, E4, D4, C#4, B3, A3, G#3, F#3.

Gb Major Scale

Musical notation for the Gb Major Scale. It consists of a single staff in treble clef with a key signature of six flats (Bb, Eb, Ab, Db, Gb, Cb). The scale is written in a single line, starting on Gb3 and ending on Gb4, with a final whole note Gb3. The notes are: Gb3, Fb3, Eb3, Db3, Cb3, Bb3, Ab3, Gb4, Fb3, Eb3, Db3, Cb3, Bb3, Ab3, Gb3.

C# Major Scale

Musical notation for the C# Major Scale. It consists of a single staff in treble clef with a key signature of three sharps (F#, C#, G#). The scale is written in a single line, starting on C#4 and ending on C#5, with a final whole note C#4. The notes are: C#4, D4, E4, F#4, G#4, A4, B4, C#5, B4, A4, G#4, F#4, E4, D4, C#4.

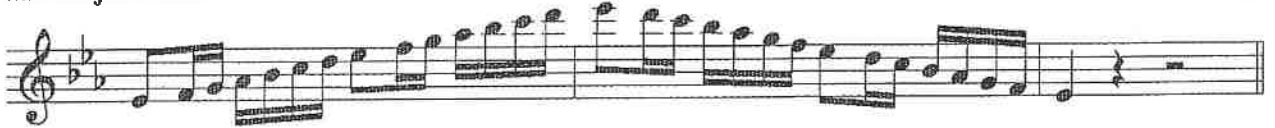
Db Major Scale

Musical notation for the Db Major Scale. It consists of a single staff in treble clef with a key signature of five flats (Bb, Eb, Ab, Db, Gb). The scale is written in a single line, starting on Db3 and ending on Db4, with a final whole note Db3. The notes are: Db3, Cb3, Bb3, Ab3, Gb3, Fb3, Eb3, Db4, Cb3, Bb3, Ab3, Gb3, Fb3, Eb3, Db3.

Ab Major Scale



Eb Major Scale



Bb Major Scale



F Major Scale



Missouri ASB Melodic Minor Scales

A Melodic Minor



E Melodic Minor



B Melodic Minor



F# Melodic Minor**C# Melodic Minor****G# Melodic Minor****A♭ Melodic Minor****D# Melodic Minor****E♭ Melodic Minor****A# Melodic Minor**

Bb Melodic Minor



F Melodic Minor



C Melodic Minor



G Melodic Minor



D Melodic Minor



ALL

Moderato

mf grazioso

p

mf

f *animato*

f *second time p*

p

1 *2*

p *rit.* *mf a tempo*

p

mf



Musical staff with treble clef, key signature of one sharp (F#), and a 3/4 time signature. The staff contains a melodic line with eighth and sixteenth notes. Red wavy lines are drawn over the notes, indicating a specific contour or intervallic relationship.

64



Musical staff with treble clef, key signature of one sharp (F#), and a 3/4 time signature. The staff contains a melodic line with eighth and sixteenth notes. Red wavy lines are drawn over the notes, indicating a specific contour or intervallic relationship.

65



Musical staff with treble clef, key signature of one sharp (F#), and a 3/4 time signature. The staff contains a melodic line with eighth and sixteenth notes. Red wavy lines are drawn over the notes, indicating a specific contour or intervallic relationship.

95 *oboe* Thirds

66



Musical staff with treble clef, key signature of one sharp (F#), and a 3/4 time signature. The staff contains a melodic line with eighth and sixteenth notes. Red wavy lines are drawn over the notes, indicating a specific contour or intervallic relationship.



Musical staff with treble clef, key signature of one sharp (F#), and a 3/4 time signature. The staff contains a melodic line with eighth and sixteenth notes. Red wavy lines are drawn over the notes, indicating a specific contour or intervallic relationship.

Common chord

67



Musical staff with treble clef, key signature of one sharp (F#), and a 3/4 time signature. The staff contains a melodic line with eighth and sixteenth notes. Red wavy lines are drawn over the notes, indicating a specific contour or intervallic relationship.

Dominant 7th chord

68



Musical staff with treble clef, key signature of one sharp (F#), and a 3/4 time signature. The staff contains a melodic line with eighth and sixteenth notes. Red wavy lines are drawn over the notes, indicating a specific contour or intervallic relationship.

G Minor

54 **Natural** **Harmonic**

Melodic

55

56

57

95
58 **Common chord**

95
59 **Diminished 7th chord**

Allegro maestoso

NIEMANN

951

24

f *mf* *f* *mf*

p cantabile

mf *p leggiero*

p *f* *p* *f*

Allegro vivace

BAERMANN

25

p *fz* *fz* *f*