

Instrument Alto Sax

Set 1 2 ③ 4

### All-District/All-State Jazz Band Audition Music

1. Swing Etude
  - a. Must be played with backing track. Find the backing tracks under the Jazz Band tab of [www.cjbands.org](http://www.cjbands.org)
  
2. Latin Etude
  - a. Must be played with backing track. Find the backing tracks under the Jazz Band tab of [www.cjbands.org](http://www.cjbands.org)
  
3. The Other Two Songs
  - a. Saxes/Trumpets/Trombones
    - 1st Chorus = Melody
    - 2nd/3rd Choruses = Improvisation
  - b. Piano/Vibes/Guitar/Bass
    - 1st Chorus = Melody
    - 2nd Chorus = Comping/Walking
    - 3rd/4th Choruses = Improvisation
  - c. Drums
    - 1st Chorus = Swing Feel with Sticks
    - 2nd Chorus = Play the Melody on the Drums
    - 3rd/4th Choruses = Solo
  
4. Drum Set Styles (Drums Only)
  - a. Follow directions on paper.

ALTO SAX.

# MOAJE SWING ETUDE 3

COMP. AARON LENDE

(BASED ON HAVE YOU MISS JONES)

$\text{♩} = 150$

*mf*

5

9

*f*

13

17

*f*

21

25

*mf*

29

*mf*

ALTO SAX.

# MOAJE LATIN ETUDE 3

COMP. AARON LEHDE

(BASED ON ST. THOMAS)

LATIN ♩=190

*f*

5

9

13

17

21

*f*

3 3

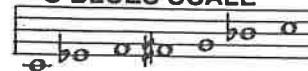
25

29

**E<sub>b</sub>**

# 6. C BLUES

C BLUES SCALE



## A MELODY

Dr. Jay

♩ = 120

Musical notation for the A section (Melody). It consists of three staves of music in 4/4 time. The first staff starts with a C7 chord and contains a melodic line with a triplet of eighth notes. The second staff continues the melody with various chords including F7, C7, and A7+9. The third staff features chords like D-, G7, E-, A7, and D-.

## B Play 4 Choruses

Musical notation for the B section (Play 4 Choruses). It consists of three staves of music in 4/4 time. The first staff starts with a C7 chord and contains a melodic line. The second staff continues the melody with various chords including F7, C7, and A7+9. The third staff features chords like D-, G7, E-, A7, and D-.

## C Play 5 Choruses

Musical notation for the C section (Play 5 Choruses). It consists of three staves of music in 4/4 time. The first staff starts with a C7 chord and contains a melodic line. The second staff continues the melody with various chords including F7, F#07, CA, D-, E-, and Eb-. The third staff features chords like D-, G7, E-, A7, and D-.

# I GOT RHYTHM

E♭ INSTRUMENTS  
HEAD

LISTEN AND ANALYZE HEAD

Track 15  
JAZZ DEMO

PLAY THE HEAD

Track 16  
PLAY ALONG

MUSIC AND LYRICS BY  
GEORGE GERSHWIN  
AND IRA GERSHWIN

MEDIUM UP-TEMPO SWING

SOLO CHORD CHANGES - 2 CHORUSES  
CREATE YOUR OWN IMPROVISATION

Track 16  
PLAY ALONG

AFTER LAST SOLO D.C. AL CODA

♠ CODA