

Instrument Bari Sax

Set 1 2 ③ 4

All-District/All-State Jazz Band Audition Music

1. Swing Etude
 - a. Must be played with backing track. Find the backing tracks under the Jazz Band tab of www.cjbands.org

2. Latin Etude
 - a. Must be played with backing track. Find the backing tracks under the Jazz Band tab of www.cjbands.org

3. The Other Two Songs
 - a. Saxes/Trumpets/Trombones
 - 1st Chorus = Melody
 - 2nd/3rd Choruses = Improvisation
 - b. Piano/Vibes/Guitar/Bass
 - 1st Chorus = Melody
 - 2nd Chorus = Comping/Walking
 - 3rd/4th Choruses = Improvisation
 - c. Drums
 - 1st Chorus = Swing Feel with Sticks
 - 2nd Chorus = Play the Melody on the Drums
 - 3rd/4th Choruses = Solo

4. Drum Set Styles (Drums Only)
 - a. Follow directions on paper.

BARITONE SAX.

MOAJE SWING ETUDE 3

COMP. AARON LENDE

(BASED ON HAVE YOU MISS JONES)

$\text{♩} = 150$

mf

5

9

f

13

17

f

21

25

mf

29

mf

BARITONE SAX.

MOAJE LATIN ETUDE 3

COMP. AARON LENDE

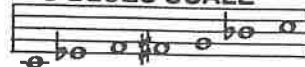
(BASED ON ST. THOMAS)

LATIN $\text{♩} = 190$

E_b

6. C BLUES

C BLUES SCALE



A MELODY

Dr. Jay

♩ = 120

Musical notation for section A, featuring a melody with various chords and triplets. Chords include C7, F7, G-, C7, F7, F7, C7, EØ, A7+9, D-, G7, E-, A7, D-, and G7. The melody includes triplets and slurs.

B Play 4 Choruses

Musical notation for section B, featuring a blues progression with chords: C7, F7, C7, G-, C7, F7, F7, C7, EØ, A7+9, D-, G7, E-, A7, D-, G7.

C Play 5 Choruses

Musical notation for section C, featuring a blues progression with chords: C7, F7, C7, G-, C7, F7, F#Ø7, CA, D-, E-, Eb-, D-, G7, E-, A7, D-, G7.

I GOT RHYTHM

E♭ INSTRUMENTS
HEAD

LISTEN AND ANALYZE HEAD

Track 15
JAZZ DEMO

PLAY THE HEAD

Track 16
PLAY ALONG

MUSIC AND LYRICS BY
GEORGE GERSHWIN
AND IRA GERSHWIN

MEDIUM UP-TEMPO SWING

SOLO CHORD CHANGES - 2 CHORUSES
CREATE YOUR OWN IMPROVISATION

Track 16
PLAY ALONG

AFTER LAST SOLO D.C. AL CODA

♩ CODA