

Instrument \_\_\_\_\_

Bass

Set 1 2 3 4

### All-District/All-State Jazz Band Audition Music

1. Swing Etude
  - a. Must be played with backing track. Find the backing tracks under the Jazz Band tab of [www.cjbands.org](http://www.cjbands.org)
  
2. Latin Etude
  - a. Must be played with backing track. Find the backing tracks under the Jazz Band tab of [www.cjbands.org](http://www.cjbands.org)
  
3. The Other Two Songs
  - a. Saxes/Trumpets/Trombones
    - 1st Chorus = Melody
    - 2nd/3rd Choruses = Improvisation
  - b. Piano/Vibes/Guitar/Bass
    - 1st Chorus = Melody
    - 2nd Chorus = Comping/Walking
    - 3rd/4th Choruses = Improvisation
  - c. Drums
    - 1st Chorus = Swing Feel with Sticks
    - 2nd Chorus = Play the Melody on the Drums
    - 3rd/4th Choruses = Solo
  
4. Drum Set Styles (Drums Only)
  - a. Follow directions on paper.

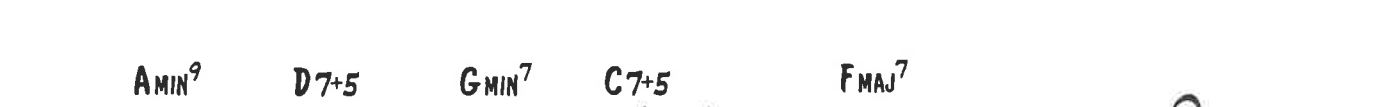
BASS

# MOAJE SWING ETUDE 3

COMP. ERIC WARREN

(BASED ON HAVE YOU MISS JONES)

SWING ♩=150



BASS

# MOAJE LATIN ETUDE 3

COMP. ERIC WARREN

(BASED ON ST. THOMAS)

LATIN  $\text{♩} = 190$



5



9



13

17  $C^6$

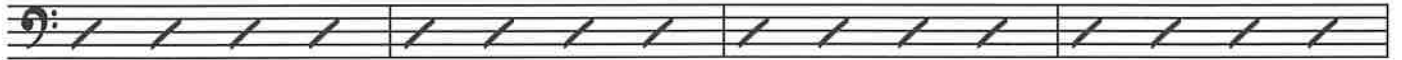
$E_{MIN}^7$

$A^7$

$D_{MIN}^7$

$G^7$

$C^6$



$C^6$

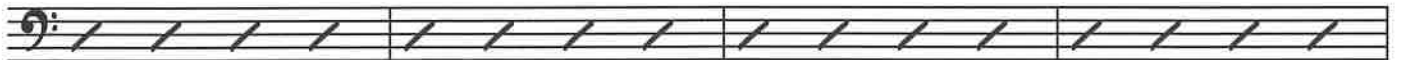
$E_{MIN}^7$

$A^7$

$D_{MIN}^7$

$G^7$

$C^6$



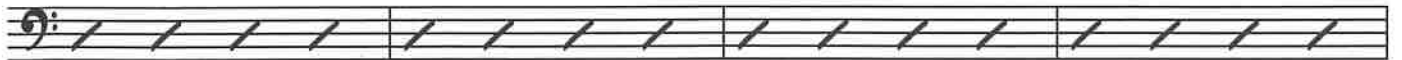
21

$E_{MIN}^7(b5)$

$A^7$

$D_{MIN}^7$

$G^7$



25

$C^7$

$C^9/E$

$F^6$

$F^{\#DIM}7$

$C^6/G$

$G^7$

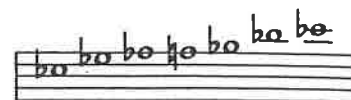
$C^6$



29



# 6. Eb BLUES



Eb BLUES SCALE

## A MELODY

### Dr. Jay

♩ = 120

Chorus 1: Eb7, Ab7, Eb7, Bb-, Eb7

Chorus 2: Ab7, Ab7, Eb7, G0, C7

Chorus 3: F-, Bb7, G-, C7, F-, Bb7

## B Play 4 Choruses

Chorus 1: Eb7, Ab7, Eb7, Bb-, Eb7

Chorus 2: Ab7, Ab7, Eb7, G0, C7+9

Chorus 3: F-, Bb7, G-, C7, F-, Bb7

## C Play 5 Choruses

Chorus 1: Eb7, Ab7, Eb7, Bb-, Eb7

Chorus 2: Ab7, A07, EbΔ, F-, G-, F#-

Chorus 3: F-, Bb7, G-, C7, F-, Bb7

BASS

# I GOT RHYTHM

LISTEN AND ANALYZE HEAD



Track 15  
JAZZ DEMO

MUSIC AND LYRICS BY  
GEORGE GERSHWIN  
AND IRA GERSHWIN

MEDIUM UP-TEMPO SWING

PLAY THE HEAD



Track 16  
PLAY ALONG

Chords: Bb, Cm7, F7, Bb, Cm7, F7, Bb7

Chords: Eb7, Ab7, Bb, Cm7, F7, Bb, D7

Chords: G7, C7, F7

Chords: Bb, Cm7, F7, Bb, Cm7, F7, Bb7

Chords: Eb7, Ab7, Bb, Cm7, F7

TO CODA ♪

SOLO SECTION - 2 CHORUSES

Chords: Cm7, F7, Bb7, Eb7, Ab7, Bb, Cm7, F7, Bb

Chords: D7, G7, C7

Chords: F7, Bb, Cm7, F7

Chords: Bb, Cm7, F7, Bb7, Eb7, Ab7, Bb

AFTER LAST SOLO  
D.C. AL CODA

♪ CODA

Chords: Bb, Dmi7, G7, Eb, F7, Bb