

Instrument Vibes/Guitar

Set 1 2 3 4

All-District/All-State Jazz Band Audition Music

1. Swing Etude
 - a. Must be played with backing track. Find the backing tracks under the Jazz Band tab of www.cjbands.org

2. Latin Etude
 - a. Must be played with backing track. Find the backing tracks under the Jazz Band tab of www.cjbands.org

3. The Other Two Songs
 - a. Saxes/Trumpets/Trombones
 - 1st Chorus = Melody
 - 2nd/3rd Choruses = Improvisation
 - b. Piano/Vibes/Guitar/Bass
 - 1st Chorus = Melody
 - 2nd Chorus = Comping/Walking
 - 3rd/4th Choruses = Improvisation
 - c. Drums
 - 1st Chorus = Swing Feel with Sticks
 - 2nd Chorus = Play the Melody on the Drums
 - 3rd/4th Choruses = Solo

4. Drum Set Styles (Drums Only)
 - a. Follow directions on paper.

GUITAR

MOAJE SWING ETUDE 3

COMP. ERIC WARREN

(BASED ON HAVE YOU MISS JONES)

♩=150

9 FMAJ⁷ A^{MIN}⁷ D^{7(b9)} G^{MIN}⁷ C⁷

A^{MIN} D^{MIN} C^{MIN}⁷ F⁷

17 B^bMAJ⁷ A^bMIN⁷ D^{b7} G^bMAJ⁷ E^{MIN}⁷ A⁷

DMAJ⁷ A^bMIN⁷ D^{b7} G^bMAJ⁷ G^{MIN}⁷ C⁷

25 FMAJ⁷ A^{MIN}⁷ D^{7(b9)} G^{MIN}⁷ C⁷

A^{MIN}⁹ D⁷⁺⁵ G^{MIN}⁷ C⁷⁺⁵ FMAJ⁷

GUITAR

MOAJE LATIN ETUDE 3

COMP. ERIC WARREN

(BASED ON ST. THOMAS)

LATIN ♩=190



17 C⁶ E^{MIN7} A⁷ D^{MIN7} G⁷ C⁶

E^{MIN7} A⁷ D^{MIN7} G⁷ C⁶

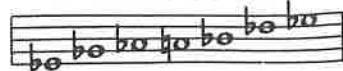
E^{MIN7(b5)} A⁷ D^{MIN7} G⁷

C⁷ C^{9/E} F^b F^{#DIM7} C^{b/G} G⁷ C⁶



6. Eb BLUES

Eb BLUES SCALE



A MELODY

Dr. Jay

♩ = 120

Musical notation for the melody section, consisting of three staves. The first staff contains the first two measures with chords Eb7, Ab7, Eb7, Bb-, and Eb7. The second staff contains measures 3-4 with chords Ab7, Ab7, Eb7, GØ, and C7+9. The third staff contains measures 5-6 with chords F-, Bb7, G-, C7, F-, and Bb7. The notation includes triplets, accents, and slurs.

B Play 4 Choruses

Musical notation for the first four choruses, consisting of three staves. The first staff contains measures 1-4 with chords Eb7, Ab7, Eb7, Bb-, and Eb7. The second staff contains measures 5-8 with chords Ab7, Ab7, Eb7, GØ, and C7+9. The third staff contains measures 9-12 with chords F-, Bb7, G-, C7, F-, and Bb7. The notation includes slurs and accents.

C Play 5 Choruses

Musical notation for the next five choruses, consisting of three staves. The first staff contains measures 13-16 with chords Eb7, Ab7, Eb7, Bb-, and Eb7. The second staff contains measures 17-20 with chords Ab7, AØ7, EbΔ, F-, G-, and F#-. The third staff contains measures 21-24 with chords F-, Bb7, G-, C7, F-, and Bb7. The notation includes slurs and accents.

I GOT RHYTHM

C INSTRUMENTS
HEAD

LISTEN AND ANALYZE HEAD

Track 15
JAZZ DEMO

PLAY THE HEAD

Track 16
PLAY ALONG

MUSIC AND LYRICS BY
GEORGE GERSHWIN
AND IRA GERSHWIN

MEDIUM UP-TEMPO SWING

Musical notation for the first four staves of the head section. The first staff is the melody. The second staff has two first endings. The third and fourth staves are accompaniment.

TO CODA

Musical notation for the fifth staff, which is the coda.

SOLO CHORD CHANGES - 2 CHORUSES CREATE YOUR OWN IMPROVISATION

Track 16
PLAY ALONG

Musical notation for the first staff of the solo section, showing chord changes: Bb, Cm7 F7, Bb, Cm7 F7, Bb7, Eb7 Ab7, Bb, Cm7 F7.

Musical notation for the second staff of the solo section, showing chord changes: Bb, D7, G7.

Musical notation for the third staff of the solo section, showing chord changes: C7, F7, Bb, Cm7 F7.

AFTER LAST SOLO D.C. AL CODA

Musical notation for the fourth staff of the solo section, showing chord changes: Bb, Cm7 F7, Bb7, Eb7 Ab7, Bb, Cm7 F7.

CODA

Musical notation for the final staff, which is the coda.