

All-District/All-State Jazz Band Auditions

1 Swing Etude

Must be played with backing track. This can be found at MOAJE.ORG under the All-State Jazz Band Tab

2 Latin Etude

Must be played with backing track. This can be found at MOAJE.ORG under the All-State Jazz Band Tab

3 The Other Two Songs (Backing tracks can be found on the Jazz Band Canvas Page)

Saxes/Trumpet/Trombone:

1. 1st chorus melody/head
2. 2nd/3rd chorus improvisation

Piano/Vibes/Guitar:

1. 1st chorus melody/head
2. 2nd chorus comping
3. 3rd/4th chorus improvisation

Bass:

1. 1st Chorus melody/head
2. 2nd chorus Walking
3. 3rd/4th chorus improvisation

Drums:

1. 1st chorus swing feel with sticks
2. 2nd chorus melody/head on drums (play the melody!)
3. 3rd/4th chorus solo over the track

4. Drum Set Styles (Drums Only)

- a. Must be played with backing tracks that are available on Canvas
- b. The judge will start/stop you as they please

BARITONE SAX.

MOAJE SWING ETUDE 4

(BASED ON TAKE THE A TRAIN)

COMP. AARON LEHDE

$\text{♩} = 142$



9

17

25

BARITONE SAX.

MOAJE LATIN ETUDE 4

COMP. AARON LEHDE

(BASED ON RECORDAME)

$\text{♩} = 147$

STRAIGHT 8'S

5 *mf*

9 *f*

13 *f*

17 *mf* *f*

21

25 *mp* *mf*

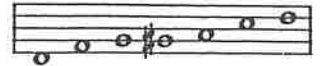
29 *f*

COPYRIGHT

E_b

8. D BLUES

D BLUES SCALE



A MELODY

A Little of This?

♩ = 100

Musical notation for the main melody, consisting of three staves. Chord progressions are indicated above the notes:

- Staff 1: D7, G7, D7, A-
- Staff 2: G7, G7, D7, F#Ø, B7+9
- Staff 3: E-, A7, F#-, B7, E-, A7

B Play 4 Choruses

Musical notation for section B, consisting of three staves. Chord progressions are indicated above the notes:

- Staff 1: D7, G7, D7, A-, D7
- Staff 2: G7, G7, D7, F#Ø, B7+9
- Staff 3: E-, A7, F#-, B7, E-, A7

C Play 4 Choruses

Musical notation for section C, consisting of three staves. Chord progressions are indicated above the notes:

- Staff 1: D7, G7, D7, A-, D7
- Staff 2: G7, AbØ7, DΔ, E-, F#-, F-
- Staff 3: E-, A7, F#-, B7, E-, A7

E♭ INSTRUMENTS

HEAD

SATIN DOLL

LISTEN AND ANALYZE HEAD



Track 11
JAZZ DEMO

PLAY THE HEAD



Track 12
PLAY ALONG

By DUKE ELLINGTON

EASY SWING
INTRO

Musical notation for the head of the piece, including an 8-measure intro and two choruses with first and second endings.

TO CODA

SOLO CHORD CHANGES - 2 CHORUSES
CREATE YOUR OWN IMPROVISATION



Track 12
PLAY ALONG

Chord changes for two choruses, including first and second endings.

1. Bm7 E7 C#m7 F#7 F#m7 B7 Fm7 Bb7 A7 Ab7 G7 F#7

2. Am7 Em7 A7 Dm7 F#m7 B7 Bm7 E7 Bm7 E7

AFTER LAST SOLO D.S. AL CODA

C#m7 F#7 F#m7 B7 Fm7 Bb7 A7 Ab7 G7 F#7

CODA

Musical notation for the coda.