

All-District/All-State Jazz Band Auditions

1 Swing Etude

Must be played with backing track. This can be found at MOAJE.ORG under the All-State Jazz Band Tab

2 Latin Etude

Must be played with backing track. This can be found at MOAJE.ORG under the All-State Jazz Band Tab

3 The Other Two Songs (Backing tracks can be found on the Jazz Band Canvas Page)

Saxes/Trumpet/Trombone:

1. 1st chorus melody/head
2. 2nd/3rd chorus improvisation

Piano/Vibes/Guitar:

1. 1st chorus melody/head
2. 2nd chorus comping
3. 3rd/4th chorus improvisation

Bass:

1. 1st Chorus melody/head
2. 2nd chorus Walking
3. 3rd/4th chorus improvisation

Drums:

1. 1st chorus swing feel with sticks
2. 2nd chorus melody/head on drums (play the melody!)
3. 3rd/4th chorus solo over the track

4. Drum Set Styles (Drums Only)

- a. Must be played with backing tracks that are available on Canvas
- b. The judge will start/stop you as they please

BASS

MOAJE SWING ETUDE 4

COMP. ERIC WARREN

(BASED ON TAKE THE A TRAIN)

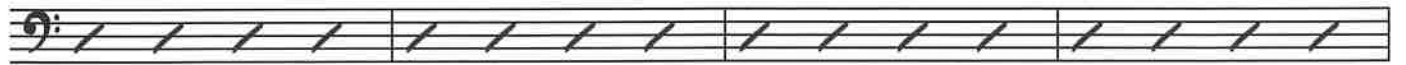
$\text{♩} = 142$



5

9 C⁶

D⁷(#11)



D^{MIN}7

G⁷

C

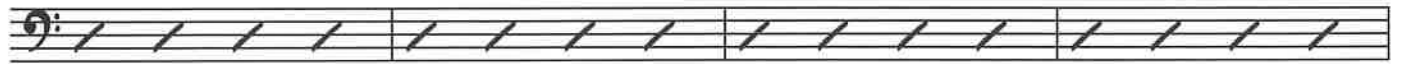
G^{MIN}7

C⁷



13

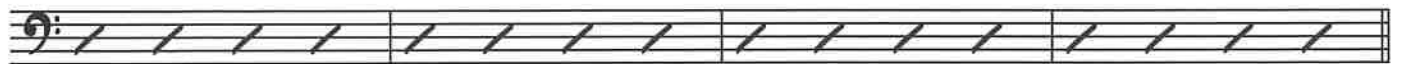
17 F^{MAJ}7



D⁹

D^{MIN}9

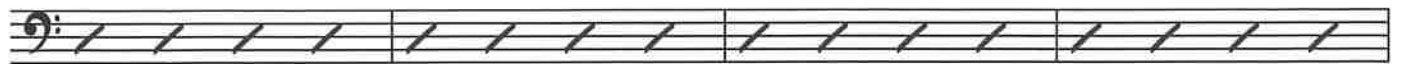
G⁷(b9)



21

25 C⁶

D⁷(#11)



D^{MIN}7

G⁷



29

COPYRIGHT

BASS

MOAJE LATIN ETUDE 4

COMP. ERIC WARREN

(BASED ON RECORDAME)

♩=147

STRAIGHT 8's



5

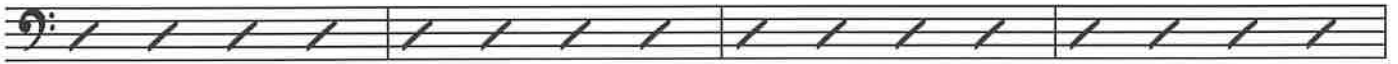


9

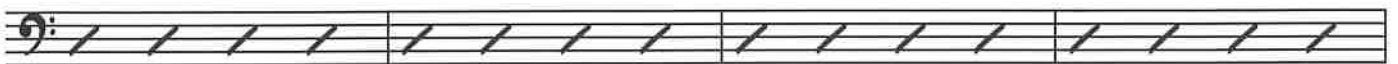


13

17 Amin⁷



Cmin⁷



21

Cmin⁷

F⁷

B^bMAJ⁷

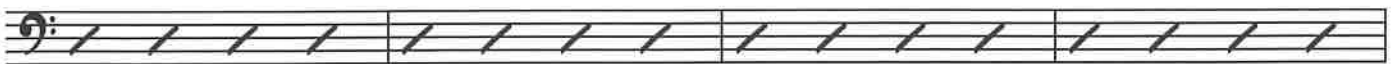
B^bMIN⁷

E^b7

A^bMAJ⁷

A^bMIN⁷

D^b7



25

G^bMAJ⁷



29

SATIN DOLL

BASS

LISTEN AND ANALYZE HEAD

Track 11
JAZZ DEMO

PLAY THE HEAD

Track 12
PLAY ALONG

BY DUKE ELLINGTON

EASY SWING
INTRO
N.C.

$\frac{9}{8}$ Dmi7 G7 Dmi7 G7

EMi7 A7 EMi7 A7 AMi7 D7 Abmi7 Db7 C7 B7 Bb7 A7

1. 2. Cma7 Gmi7 C7 Fma7

AMI7 D7 Dmi7 G7 Dmi7 G7 Dmi7 G7

TO CODA Φ EMi7 A7 EMi7 A7 AMi7 D7 Abmi7 Db7 C7 B7 Bb7 A7

SOLO SECTION - 2 CHORUSES

Dmi7 G7 Dmi7 G7 EMi7 A7 EMi7 A7 AMi7 D7 Abmi7 Db7

1. 2. C7 B7 Bb7 A7 Cma7 Gmi7 C7

Fma7 AMi7 D7 Dmi7 G7 Dmi7 G7

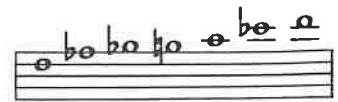
AFTER LAST SOLO
D.S. $\frac{9}{8}$ AL CODA

Dmi7 G7 EMi7 A7 EMi7 A7 AMi7 D7 Abmi7 Db7 C7 B7 Bb7 A7

Φ CODA AMi7 D7 Abmi7 Db7 C7 B7 Bb7 A7 AMi7 D7 Abmi7 Db7 C $\frac{9}{8}$



8. F BLUES



F BLUES SCALE

A Little of This?

♩ = 100

First system: F7, Bb7, F7, C-, F7

Second system: Bb7, Bb7, F7, A∅, D7+9

Third system: G-, C7, A-, D7, G-, C7

B Play 4 Choruses

Chorus 1: F7, Bb7, F7, C-, F7

Chorus 2: Bb7, Bb7, F7, A∅, D7+9

Chorus 3: G-, C7, A-, D7, G-, C7

C Play 4 Choruses

Chorus 1: F7, Bb7, F7, C-, F7

Chorus 2: Bb7, Bb7, F7, A∅, D7+9

Chorus 3: G-, C7, A-, D7, G-, C7

Chorus 4: Bb7, Bb7, F7, A∅, D7+9