

All-District/All-State Jazz Band Auditions

1 Swing Etude

Must be played with backing track. This can be found at MOAJE.ORG under the All-State Jazz Band Tab

2 Latin Etude

Must be played with backing track. This can be found at MOAJE.ORG under the All-State Jazz Band Tab

3 The Other Two Songs (Backing tracks can be found on the Jazz Band Canvas Page)

Saxes/Trumpet/Trombone:

1. 1st chorus melody/head
2. 2nd/3rd chorus improvisation

Piano/Vibes/Guitar:

1. 1st chorus melody/head
2. 2nd chorus comping
3. 3rd/4th chorus improvisation

Bass:

1. 1st Chorus melody/head
2. 2nd chorus Walking
3. 3rd/4th chorus improvisation

Drums:

1. 1st chorus swing feel with sticks
2. 2nd chorus melody/head on drums (play the melody!)
3. 3rd/4th chorus solo over the track

4. Drum Set Styles (Drums Only)

- a. Must be played with backing tracks that are available on Canvas
- b. The judge will start/stop you as they please

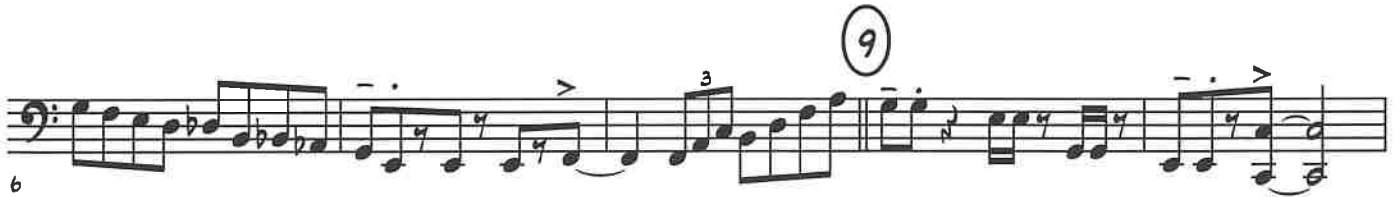
BASS TROMBONE

MOAJE SWING ETUDE 4

(BASED ON TAKE THE A TRAIN)

MM=142

ARRANGED BY DAVE DICKEY



BASS TROMBONE

MOAJE LATIN ETUDE 4

(BASED ON RECORDAME)

MM = 147

ARRANGED BY DAVE DICKEY

5

10

15

(17)

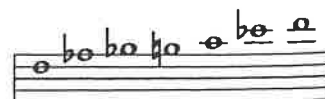
21

26

31



8. F BLUES



F BLUES SCALE

A Little of This?

♩ = 100

First system: F7, Bb7, F7, C-, F7

Second system: Bb7, Bb7, F7, A∅, D7+9

Third system: G-, C7, A-, D7, G-, C7

B Play 4 Choruses

First system: F7, Bb7, F7, C-, F7

Second system: Bb7, Bb7, F7, A∅, D7+9

Third system: G-, C7, A-, D7, G-, C7

C Play 4 Choruses

First system: F7, Bb7, F7, C-, F7

Second system: Bb7, B07, FΔ, G-, A-, Ab-

Third system: G-, C7, A-, D7, G-, C7

B.C. INSTRUMENTS

SATIN DOLL

HEAD

LISTEN AND ANALYZE HEAD

Track 11
JAZZ DEMO

EASY SWING
INTRO

PLAY THE HEAD

Track 12
PLAY ALONG

BY DUKE ELLINGTON

4

TO CODA

SOLO CHORD CHANGES - 2 CHORUSES CREATE YOUR OWN IMPROVISATION

Track 12
PLAY ALONG

1. Dmi7 G7 Emi7 A7 Ami7 D7 Abmi7 Db7 C7 B7 Bb7 A7

2. Cmaj7 Gmi7 C7 Fmaj7

Ami7 D7 Dmi7 G7 Dmi7 G7

Emi7 A7 Ami7 D7 Abmi7 Db7 C7 B7 Bb7 A7

AFTER LAST SOLO D.S. AL CODA

CODA