

All-District/All-State Jazz Band Auditions

1 Swing Etude

Must be played with backing track. This can be found at MOAJE.ORG under the All-State Jazz Band Tab

2 Latin Etude

Must be played with backing track. This can be found at MOAJE.ORG under the All-State Jazz Band Tab

3 The Other Two Songs (Backing tracks can be found on the Jazz Band Canvas Page)

Saxes/Trumpet/Trombone:

- 1. 1st chorus melody/head
- 2. 2nd/3rd chorus improvisation

Piano/Vibes/Guitar:

- 1. 1st chorus melody/head
- 2. 2nd chorus comping
- 3. 3rd/4th chorus improvisation

Bass:

- 1. 1st Chorus melody/head
- 2. 2nd chorus Walking
- 3. 3rd/4th chorus improvisation

Drums:

- 1. 1st chorus swing feel with sticks
- 2. 2nd chorus melody/head on drums (play the melody!)
- 3. 3rd/4th chorus solo over the track

4. Drum Set Styles (Drums Only)

- a. Must be played with backing tracks that are available on Canvas
- b. The judge will start/stop you as they please

DRUM SET

MOAJE SWING ETUDE 4

(BASED ON TAKE THE A TRAIN)

COMP. KEVIN GIANINO & ERIC WARREN

$\text{♩} = 142$



9 *SIMILIE AD LIB*

13

17

21

25

29

DRUM SET

MOAJE LATIN ETUDE 4

COMP. KEVIN GIANINO & ERIC WARREN

(BASED ON RECORDAME)

♩=147

STRAIGHT ♩'s

Musical notation for the first section of the drum set etude, measures 1-16. The notation is written on a grand staff with a 4/4 time signature. It features a complex rhythmic pattern of eighth and sixteenth notes, with 'x' marks above the notes indicating specific drum hits. The pattern is repeated across four staves, with measure numbers 5, 9, and 13 indicated at the start of their respective staves.

17 *SIMILIE AD LIB*

Musical notation for the second section of the drum set etude, measures 17-20. This section consists of four measures of a simple, steady eighth-note pattern, represented by diagonal slashes on the staff.

FILL

Musical notation for the third section of the drum set etude, measures 21-24. This section consists of four measures of a simple, steady eighth-note pattern, represented by diagonal slashes on the staff.

21

Musical notation for the fourth section of the drum set etude, measures 25-28. This section consists of four measures of a simple, steady eighth-note pattern, represented by diagonal slashes on the staff.

25

Musical notation for the fifth section of the drum set etude, measures 29-32. This section consists of four measures, starting with a simple eighth-note pattern and ending with a more complex rhythmic figure. The notation includes eighth notes, quarter notes, and a final measure with a diamond-shaped note.

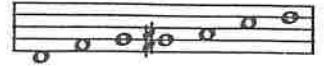
29

COPYRIGHT

E_b

8. D BLUES

D BLUES SCALE



A MELODY

A Little of This?

♩ = 100

Musical notation for the main melody, consisting of three staves. Chord progressions are indicated above the notes:

- Staff 1: D7, G7, D7, A-
- Staff 2: G7, G7, D7, F#Ø, B7+9
- Staff 3: E-, A7, F#-, B7, E-, A7

Trills are marked with a '3' and a '3' below the notes in the third staff.

B Play 4 Choruses

Musical notation for section B, consisting of three staves. Chord progressions are indicated above the notes:

- Staff 1: D7, G7, D7, A-, D7
- Staff 2: G7, G7, D7, F#Ø, B7+9
- Staff 3: E-, A7, F#-, B7, E-, A7

C Play 4 Choruses

Musical notation for section C, consisting of three staves. Chord progressions are indicated above the notes:

- Staff 1: D7, G7, D7, A-, D7
- Staff 2: G7, Ab°7, DΔ, E-, F#-, F-
- Staff 3: E-, A7, F#-, B7, E-, A7

DRUMS

SATIN DOLL

LISTEN AND ANALYZE HEAD

Track 11
JAZZ DEMO

PLAY THE HEAD

Track 12
PLAY ALONG

By DUKE ELLINGTON

EASY SWING INTRO

SOLO SECTION - 2 CHORUSES

AFTER LAST SOLO
D.S. $\text{\textcircled{S}}$ AL CODA

⊕ CODA

E♭ INSTRUMENTS
HEAD

SATIN DOLL

LISTEN AND ANALYZE HEAD

Track 11
JAZZ DEMO

PLAY THE HEAD

Track 12
PLAY ALONG

BY DUKE ELLINGTON

EASY SWING
INTRO

TO CODA

SOLO CHORD CHANGES - 2 CHORUSES
CREATE YOUR OWN IMPROVISATION

Track 12
PLAY ALONG

1. Bm7 E7 C#m7 F#7 F#m7 B7 Fm7 Bb7 A7 Ab7 G7 F#7

2. Am7 Em7 A7 Dm7

F#m7 B7 Bm7 E7 Bm7 E7

1. C#m7 F#7 F#m7 B7 Fm7 Bb7 A7 Ab7 G7 F#7

2. CODA

Missouri Association for Jazz Education

Required Drum Set Styles

edited by Michael Sekelsky
 PAS Drum Set Committee - chair
 audio/video examples of grooves:
www.ucmmusic.com/profiles/sekelsky/

As you perform each style:

- First, establish the style.
- Second, comp (ad lib) while maintaining the groove.

Note: The snare rhythms are not mandatory; other rhythms are allowed.

Play alongs for all styles: *Groove Essentials* by Tommy Igoe, Hudson Music.

Legend

A musical staff in 4/4 time showing various drum set notations: Ride Cymbal (x), Hi hat w/stick (x), Snare (solid dot), Snare ghost note (solid dot with a vertical line), Latin rim knock (solid dot with a vertical line), Bass Drum (solid dot), and Hi hat w/foot (x).

Basic Swing: ♩ = 100 (or moderate tempo)

Drum set notation for Basic Swing in 4/4 time. The pattern features a snare drum playing a triplet of eighth notes on the second beat, followed by a snare ghost note on the third beat, and a snare drum playing a triplet of eighth notes on the fourth beat.

Shuffle (swing): ♩ = 120 (or moderate tempo)

Drum set notation for Shuffle (swing) in 4/4 time. The pattern features a snare drum playing a triplet of eighth notes on the second beat, followed by a snare ghost note on the third beat, and a snare drum playing a triplet of eighth notes on the fourth beat.

Jazz Waltz: ♩ = 120 (or moderate tempo)

Drum set notation for Jazz Waltz in 3/4 time. The pattern features a snare drum playing a triplet of eighth notes on the first beat, followed by a snare ghost note on the second beat, and a snare drum playing a triplet of eighth notes on the third beat.

Bossa Nova, 2-3 version: ♩ = 120 (or faster tempo)

Drum set notation for Bossa Nova, 2-3 version in 4/4 time. The pattern features a snare drum playing a triplet of eighth notes on the second beat, followed by a snare ghost note on the third beat, and a snare drum playing a triplet of eighth notes on the fourth beat.

Samba: ♩ = 100 (or faster tempo)

Drum set notation for Samba in 4/4 time. The pattern features a snare drum playing a triplet of eighth notes on the second beat, followed by a snare ghost note on the third beat, and a snare drum playing a triplet of eighth notes on the fourth beat.

Funk: ♩ = 100 (or moderate tempo)

Drum set notation for Funk in 4/4 time. The pattern features a snare drum playing a triplet of eighth notes on the second beat, followed by a snare ghost note on the third beat, and a snare drum playing a triplet of eighth notes on the fourth beat.