

All-District/All-State Jazz Band Auditions

1 Swing Etude

Must be played with backing track. This can be found at MOAJE.ORG under the All-State Jazz Band Tab

2 Latin Etude

Must be played with backing track. This can be found at MOAJE.ORG under the All-State Jazz Band Tab

3 The Other Two Songs (Backing tracks can be found on the Jazz Band Canvas Page)

Saxes/Trumpet/Trombone:

1. 1st chorus melody/head
2. 2nd/3rd chorus improvisation

Piano/Vibes/Guitar:

1. 1st chorus melody/head
2. 2nd chorus comping
3. 3rd/4th chorus improvisation

Bass:

1. 1st Chorus melody/head
2. 2nd chorus Walking
3. 3rd/4th chorus improvisation

Drums:

1. 1st chorus swing feel with sticks
2. 2nd chorus melody/head on drums (play the melody!)
3. 3rd/4th chorus solo over the track

4. Drum Set Styles (Drums Only)

- a. Must be played with backing tracks that are available on Canvas
- b. The judge will start/stop you as they please

GUITAR

MOAJE SWING ETUDE 4

COMP. ERIC WARREN

(BASED ON TAKE THE A TRAIN)

♩=142



9 C⁶

D⁷(#11)



D^{MIN}7

G⁷

C

G^{MIN}7

C⁷



17 F^{MAJ}7



D⁹

D^{MIN}9

G⁷(b9)



25 C⁶

D⁷(#11)



D^{MIN}7

G⁷



COPYRIGHT

GUITAR

MOAJE LATIN ETUDE 4

COMP. ERIC WARREN

(BASED ON RECORDAME)

♩=147

STRAIGHT ♪'s

5

9

13

17 A MIN⁷

C MIN⁷ C MIN⁷ F⁷

21

B^b MAJ⁷ B^b MIN⁷ E^b7 A^b MAJ⁷ A^b MIN⁷ D^b7

25

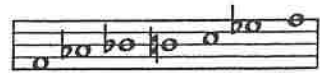
G^b MAJ⁷ G MIN⁷ C⁷ F MAJ⁷ E⁷(#9)

29

COPYRIGHT



8. F BLUES



F BLUES SCALE

A MELODY

A Little of This?

♩ = 100

Musical notation for Section A, Melody. It consists of three staves of music in 4/4 time. The first staff contains measures 1-4 with chords F7, Bb7, F7, C-, and F7. The second staff contains measures 5-8 with chords Bb7, Bb7, F7, A∅, and D7+9. The third staff contains measures 9-12 with chords G-, C7, A-, D7, G-, and C7. There are triplets in measures 10 and 11.

B Play 4 Choruses

Musical notation for Section B, Play 4 Choruses. It consists of three staves of music in 4/4 time. The first staff contains measures 1-4 with chords F7, Bb7, F7, C-, and F7. The second staff contains measures 5-8 with chords Bb7, Bb7, F7, A∅, and D7+9. The third staff contains measures 9-12 with chords G-, C7, A-, D7, G-, and C7. Circles are drawn around the chord symbols in each measure.

C Play 4 Choruses

Musical notation for Section C, Play 4 Choruses. It consists of three staves of music in 4/4 time. The first staff contains measures 1-4 with chords F7, Bb7, F7, C-, and F7. The second staff contains measures 5-8 with chords Bb7, Bb7, F7, A∅, and D7+9. The third staff contains measures 9-12 with chords G-, C7, A-, D7, G-, and C7. Circles are drawn around the chord symbols in each measure.

C INSTRUMENTS
HEAD

SATIN DOLL

LISTEN AND ANALYZE HEAD

PLAY THE HEAD

Track 11
JAZZ DEMO

Track 12
PLAY ALONG

BY DUKE ELLINGTON

EASY SWING
INTRO

4

Musical notation for the head of the piece, including an 8-measure intro and two choruses of 8 measures each. The first chorus has a first ending and a second ending. The second ending leads to a coda.

TO CODA

SOLO CHORD CHANGES - 2 CHORUSES CREATE YOUR OWN IMPROVISATION

Track 12
PLAY ALONG

Chord changes for two choruses. The first chorus has 8 chords: Dmi7, G7, Emi7, A7, Ami7, D7, Abmi7, Db7. The second chorus has 6 chords: Cmaj7, Gmi7, C7, Fmaj7, Ami7, D7, Dmi7, G7. The third chorus has 8 chords: Emi7, A7, Ami7, D7, Abmi7, Db7, C7, B7, Bb7, A7.

AFTER LAST SOLO D.S. AL CODA

CODA

Musical notation for the coda, consisting of 8 measures.