

All-District/All-State Jazz Band Auditions

1 Swing Etude

Must be played with backing track. This can be found at MOAJE.ORG under the All-State Jazz Band Tab

2 Latin Etude

Must be played with backing track. This can be found at MOAJE.ORG under the All-State Jazz Band Tab

3 The Other Two Songs (Backing tracks can be found on the Jazz Band Canvas Page)

Saxes/Trumpet/Trombone:

1. 1st chorus melody/head
2. 2nd/3rd chorus improvisation

Piano/Vibes/Guitar:

1. 1st chorus melody/head
2. 2nd chorus comping
3. 3rd/4th chorus improvisation

Bass:

1. 1st Chorus melody/head
2. 2nd chorus Walking
3. 3rd/4th chorus improvisation

Drums:

1. 1st chorus swing feel with sticks
2. 2nd chorus melody/head on drums (play the melody!)
3. 3rd/4th chorus solo over the track

4. Drum Set Styles (Drums Only)

- a. Must be played with backing tracks that are available on Canvas
- b. The judge will start/stop you as they please

PIANO

MOAJE SWING ETUDE 4

(BASED ON TAKE THE A TRAIN)

COMP. ERIC WARREN

♩ = 142



PIANO

PNO.

9 C^b $D^7(\#11)$

13 D^{MIN7} G^7 C G^{MIN7} C^7

MOAJE SWING ETUDE 4

17 FMAJ⁷

PNO.

D⁹

D^{MIN9}

G^{7(b9)}

PNO.

21

25 C⁶

D^{7(#11)}

PNO.

D^{MIN7}

G⁷

PNO.

29

PIANO

MOAJE LATIN ETUDE 4

COMP. ERIC WARREN

♩=147

(BASED ON RECORDAME)

STRAIGHT ♩'s

PIANO

Measures 1-4: Treble clef staff contains notes and chords. Bass clef staff is mostly empty.

PNO.

Measures 5-8: Treble clef staff contains notes and chords. Bass clef staff is mostly empty.

PNO.

Measures 9-13: Treble clef staff contains notes and chords. Bass clef staff contains a rhythmic accompaniment.

PNO.

Measures 14-17: Treble clef staff contains notes and chords. Bass clef staff contains a rhythmic accompaniment.

MOAJE LATIN ETUDE 4

2
17 A MIN⁷

PNO.

Four measures of piano accompaniment. The first measure contains a treble clef and a bass clef. Measures 18, 19, and 20 are blank, indicating a continuation of the previous pattern.

PNO.

C MIN⁷ C MIN⁷ F⁷

Four measures of piano accompaniment. The first measure contains a treble clef and a bass clef. Measures 22, 23, and 24 are blank. Chord labels C MIN⁷ and F⁷ are positioned above the staff.

PNO.

B^b MAJ⁷ B^b MIN⁷ E^b7 A^b MAJ⁷ A^b MIN⁷ D^b7

Four measures of piano accompaniment. The first measure contains a treble clef and a bass clef. Measures 26, 27, and 28 are blank. Chord labels B^b MAJ⁷, B^b MIN⁷, E^b7, A^b MAJ⁷, A^b MIN⁷, and D^b7 are positioned above the staff.

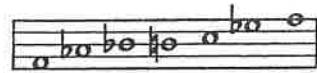
PNO.

G^b MAJ⁷

Four measures of piano accompaniment. The first measure contains a treble clef and a bass clef. Measures 29-32 contain musical notation with notes and chords. The chord label G^b MAJ⁷ is positioned above the staff.



8. F BLUES



F BLUES SCALE

A MELODY

A Little of This?

♩ = 100

Chord progression for Section A:

F7 Bb7 F7 C- F7

Bb7 Bb7 F7 A∅ D7+9

G- C7 A- D7 G- C7

B Play 4 Choruses

Chord progression for Section B:

F7 Bb7 F7 C- F7

Bb7 Bb7 F7 A∅ D7+9

G- C7 A- D7 G- C7

C Play 4 Choruses

Chord progression for Section C:

F7 Bb7 F7 C- F7

Bb7 Bb7 Bb7 FΔ G- A- Ab-

G- C7 A- D7 G- C7

PIANO

SATIN DOLL

LISTEN AND ANALYZE HEAD

Track 11
JAZZ DEMO

PLAY THE HEAD

Track 12
PLAY ALONG

By DUKE ELLINGTON

EASY SWING
INTRO

N.C.

Chords: Dmi7, G7, Dmi7, G7, Emi7, A7

Chords: Emi7, A7, Ami7, D7, Abmi7, Db7

1. Chords: C7, B7, Bb7, A7, Cm7

2.

© 1942 (Renewed 1970) EMI ROBBINS CATALOG INC.
 All Rights Controlled by EMI ROBBINS CATALOG INC. (Publishing)
 and WARNER BROS. PUBLICATIONS U.S. INC. (Print)
 All Rights Reserved

GMi7 C7 Fmi7

Ami7 D7 Dmi7 G7

TO CODA ☺
Dmi7 G7 Dmi7^{8va} G7 Emi7 A7^{8va} Emi7 A7

Ami7 D7 Abmi7 Db7 C7 B7 Bb7 A7

SUGGESTED RHYTHMS FOR COMPING

PATTERN A.)



PATTERN B.)



PATTERN C.)



SOLO SECTION - 2 CHORUSES

SUGGESTED VOICINGS FOR COMPING



Track 12
PLAY ALONG

Chord voicings for the first system:

- Dmi7**: Treble clef, F4, G4, A4, B4; Bass clef, D3, F3, A3, B3
- G7**: Treble clef, B4, D5, F5, G5; Bass clef, G2, B2, D3, F3
- Emi7**: Treble clef, G4, A4, B4, C5; Bass clef, E3, G3, B3, C4
- A7**: Treble clef, C#5, E5, G5, A5; Bass clef, A2, C3, E3, G3
- Ami7**: Treble clef, C4, D4, E4, F4; Bass clef, A2, C3, E3, G3
- D7**: Treble clef, F4, G4, A4, B4; Bass clef, D3, F3, A3, B3

Chord voicings for the second system:

- Abmi7**: Treble clef, Bb4, C5, D5, Eb5; Bass clef, Ab2, C3, Eb3, G3
- Db7**: Treble clef, F4, G4, Ab4, Bb4; Bass clef, Db2, F3, Ab3, Bb3
- C7**: Treble clef, E4, F4, G4, A4; Bass clef, C3, E3, G3, A3
- B7**: Treble clef, D4, E4, F4, G4; Bass clef, B2, D3, F3, G3
- Bb7**: Treble clef, D4, E4, F4, G4; Bass clef, Bb2, D3, F3, G3
- A7**: Treble clef, C#4, D4, E4, F4; Bass clef, A2, C3, E3, G3
- C#m7**: Treble clef, E4, F4, G4, A4; Bass clef, C#3, E3, G3, A3

Chord voicings for the third system:

- Gmi7**: Treble clef, B4, C5, D5, E5; Bass clef, G2, B2, D3, E3
- C7**: Treble clef, E4, F4, G4, A4; Bass clef, C3, E3, G3, A3
- F#m7**: Treble clef, G4, A4, B4, C5; Bass clef, F#3, A3, C4, D4
- F#m7**: Treble clef, G4, A4, B4, C5; Bass clef, F#3, A3, C4, D4

Chord voicings for the fourth system:

- Ami7**: Treble clef, C4, D4, E4, F4; Bass clef, A2, C3, E3, G3
- D7**: Treble clef, F4, G4, A4, B4; Bass clef, D3, F3, A3, B3
- Dmi7**: Treble clef, F4, G4, A4, B4; Bass clef, D3, F3, A3, B3
- G7**: Treble clef, B4, D5, F5, G5; Bass clef, G2, B2, D3, F3

Dmi7 G7 Emi7 A7

This system contains four measures of chords. The first measure has Dmi7 in both hands. The second measure has G7 in both hands. The third measure has Emi7 in both hands. The fourth measure has A7 in both hands.

AFTER LAST SOLO
D.S. & AL CODA

Ami7 D7 Abmi7 Db7 C7 B7 Bb7 A7

This system contains eight measures of chords. The first measure has Ami7 in both hands. The second measure has D7 in both hands. The third measure has Abmi7 in both hands. The fourth measure has Db7 in both hands. The fifth measure has C7 in both hands. The sixth measure has B7 in both hands. The seventh measure has Bb7 in both hands. The eighth measure has A7 in both hands.

CODA
 Ami7 D7 Abmi7 Db7 C7 B7

This system contains six measures of chords. The first measure has Ami7 in both hands. The second measure has D7 in both hands. The third measure has Abmi7 in both hands. The fourth measure has Db7 in both hands. The fifth measure has C7 in both hands. The sixth measure has B7 in both hands.

Bb7 A7 Ami7 D7 Abmi7 Db7 C#

This system contains seven measures of chords. The first measure has Bb7 in both hands. The second measure has A7 in both hands. The third measure has Ami7 in both hands. The fourth measure has D7 in both hands. The fifth measure has Abmi7 in both hands. The sixth measure has Db7 in both hands. The seventh measure has C# in both hands.