

All-District/All-State Jazz Band Auditions

1 Swing Etude

Must be played with backing track. This can be found at MOAJE.ORG under the All-State Jazz Band Tab

2 Latin Etude

Must be played with backing track. This can be found at MOAJE.ORG under the All-State Jazz Band Tab

3 The Other Two Songs (Backing tracks can be found on the Jazz Band Canvas Page)

Saxes/Trumpet/Trombone:

1. 1st chorus melody/head
2. 2nd/3rd chorus improvisation

Piano/Vibes/Guitar:

1. 1st chorus melody/head
2. 2nd chorus comping
3. 3rd/4th chorus improvisation

Bass:

1. 1st Chorus melody/head
2. 2nd chorus Walking
3. 3rd/4th chorus improvisation

Drums:

1. 1st chorus swing feel with sticks
2. 2nd chorus melody/head on drums (play the melody!)
3. 3rd/4th chorus solo over the track

4. Drum Set Styles (Drums Only)

- a. Must be played with backing tracks that are available on Canvas
- b. The judge will start/stop you as they please

TROMBONE

MOAJE SWING ETUDE 4

(BASED ON TAKE THE A TRAIN)

NM=142

ARRANGED BY DAVE DICKEY

First staff of music, bass clef, 4/4 time signature. It begins with a series of eighth notes and quarter notes, including accents and slurs.

Second staff of music, bass clef, 4/4 time signature. It features eighth notes and quarter notes with slurs and accents. Measure numbers 5, 3, and 3 are indicated below the staff.

Third staff of music, bass clef, 4/4 time signature. It contains eighth notes and quarter notes with slurs and accents. A circled measure number 9 is at the beginning. A triplet of eighth notes is marked with a '3' below it.

Fourth staff of music, bass clef, 4/4 time signature. It features eighth notes and quarter notes with slurs and accents. A circled measure number 17 is present. Measure numbers 14 and 17 are indicated below the staff.

Fifth staff of music, bass clef, 4/4 time signature. It contains eighth notes and quarter notes with slurs and accents. Measure numbers 19, 3, and 3 are indicated below the staff.

Sixth staff of music, bass clef, 4/4 time signature. It features eighth notes and quarter notes with slurs and accents. A circled measure number 25 is present. Measure number 24 is indicated below the staff.

Seventh staff of music, bass clef, 4/4 time signature. It contains eighth notes and quarter notes with slurs and accents. Measure number 28 and a triplet of eighth notes marked with a '3' are indicated below the staff.

TROMBONE

MOAJE LATIN ETUDE 4

(BASED ON RECORDAME)

MM = 147

5

10

17

15

21

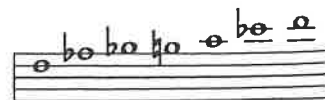
26

30

3



8. F BLUES



F BLUES SCALE

A Little of This?

♩ = 100

First system: F7, Bb7, F7, C-, F7

Second system: Bb7, Bb7, F7, A∅, D7+9

Third system: G-, C7, A-, D7, G-, C7

B Play 4 Choruses

First system: F7, Bb7, F7, C-, F7

Second system: Bb7, Bb7, F7, A∅, D7+9

Third system: G-, C7, A-, D7, G-, C7

C Play 4 Choruses

First system: F7, Bb7, F7, C-, F7

Second system: Bb7, Bb7, F7, G-, A-, Ab-

Third system: G-, C7, A-, D7, G-, C7

B.C. INSTRUMENTS

SATIN DOLL

HEAD

LISTEN AND ANALYZE HEAD

Track 11
JAZZ DEMO

EASY SWING
INTRO

PLAY THE HEAD

Track 12
PLAY ALONG

BY DUKE ELLINGTON

8-measure introduction: 4 $\text{\$}$

32-measure main melody with first and second endings.

TO CODA \oplus

SOLO CHORD CHANGES - 2 CHORUSES CREATE YOUR OWN IMPROVISATION

Track 12
PLAY ALONG

Chorus 1: Dmi7 G7 Emi7 A7 Ami7 D7 Abmi7 Db7 C7 B7 Bb7 A7

Chorus 2: Cmaj7 Gmi7 C7 Fmaj7

Chorus 3: Ami7 D7 Dmi7 G7 Dmi7 G7

Chorus 4: Emi7 A7 Ami7 D7 Abmi7 Db7 C7 B7 Bb7 A7

AFTER LAST SOLO D.S. $\text{\$}$ AL CODA

\oplus CODA